

H PARTS LIST

PARALIFT ULTRA Truck Mount

LIT NO: H660

DATE: June 2005

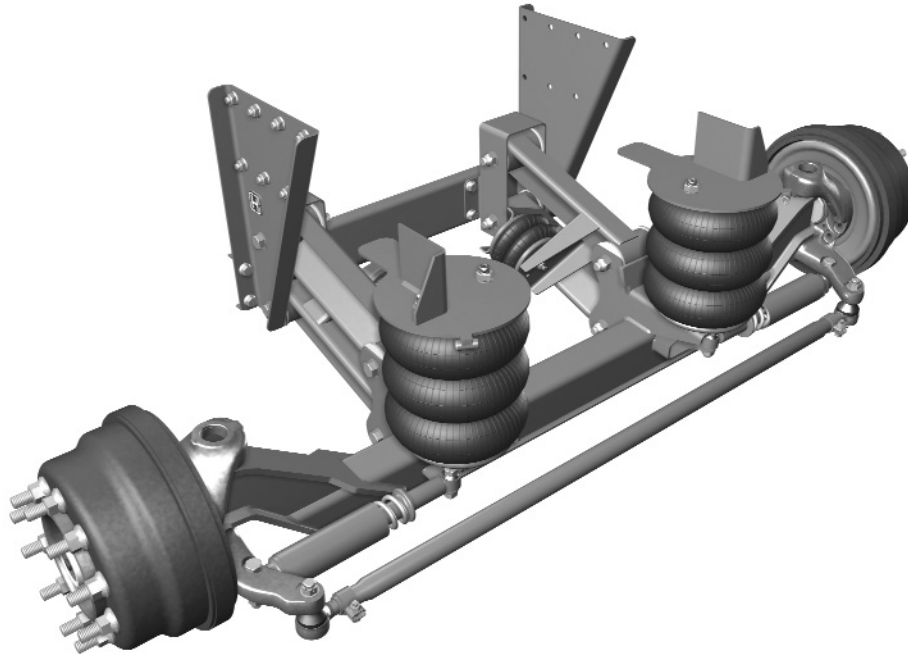
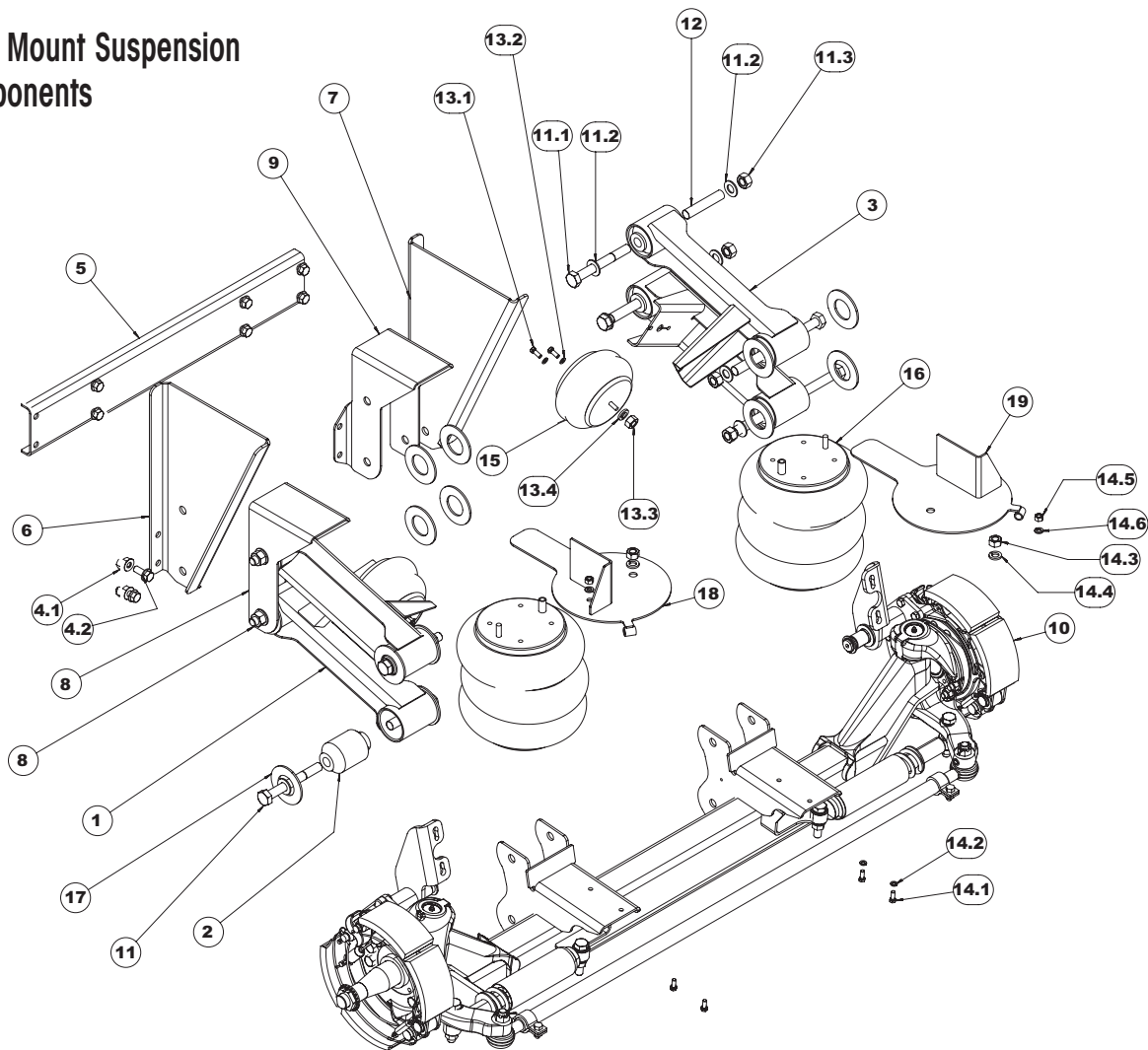


TABLE OF CONTENTS

Truck Mount Suspension Components	2
Bushing Kit.....	2
Truck Mount Axle Components.....	3
Kingpin Bushing Kit.....	3



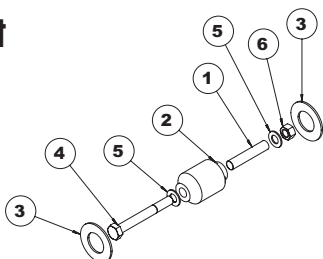
Truck Mount Suspension Components



ITEM	PART NUMBER	DESCRIPTION	QUANTITY
1	002006-1	Z-BEAM ASSEMBLY	2
1	002062-1	Z-BEAM WELDMENT	2
2	002582-1	BUSHING	8
3	002006-2	Z-BEAM ASSEMBLY	2
4	002011	CROSSMEMBER BOLT KIT	1
4.1	SA-7000-5	5/8-11 FLANGE NUT	8
4.2	SA-6900-3	5/8-11 X 1-1/2 FLANGE BOLT	8
5	002067-1-2-3	CROSSMEMBER 33.5/34/34.5	1
6	002336-1	SIDE RAIL	1
7	002336-2	SIDE RAIL	1
8	002679-1	BUSHING SADDLE	1
9	002679-2	BUSHING SADDLE	1
10	AXLE ASSY	CALL WITH MODEL NUMBER FOR PN	1
11	A-14488	PIVOT BOLT KIT	1
11.1	SA-1000-109	7/8-9 X 7-1/2 HHB GRADE 8	8
11.2	SA-1500-25	7/8 FLAT WASHER R.40-45-C	46
11.3	SA-8900-29	7/8-9 TORQUE NUT	8
12	002520	PLASTIC LINER	8

ITEM	PART NUMBER	DESCRIPTION	QUANTITY
13	A-20079	AIR SPRING BOLT KIT (LIFT)	2
13.1	SA-1100-6	3/8-16 X 1 HHB GRADE 5	2
13.2	SA-1600-1	3/8 REGULAR LOCK WASHER	2
13.3	SA-1300-8	3/4-16 HEX NUT GRADE B	2
13.4	SA-1600-5	3/4 LOCK WASHER	2
14	A-8517	AIR SPRING BOLT KIT (RIDE)	2
14.1	SA-1100-6	3/8-16 X 1 HHB GRADE 5	2
14.2	SA-1600-1	3/8 REGULAR LOCK WASHER	2
14.3	SA-1300-8	3/4-16 HEX NUT GRADE B	2
14.4	SA-1600-5	3/4 LOCK WASHER	2
14.5	SA-1300-4	1/2-13 HEX NUT	2
14.6	SA-1600-4	1/2 LOCK WASHER	2
15	B-14486	AIR SPRING (LIFT)	2
16	B-14487	AIR SPRING (RIDE)	2
17	B-14495	WEAR PAD	16
18	C-14489-1	UPPER AIR SPRING PLATE WELDMENT	1
19	C-14489-2	UPPER AIR SPRING PLATE WELDMENT	1

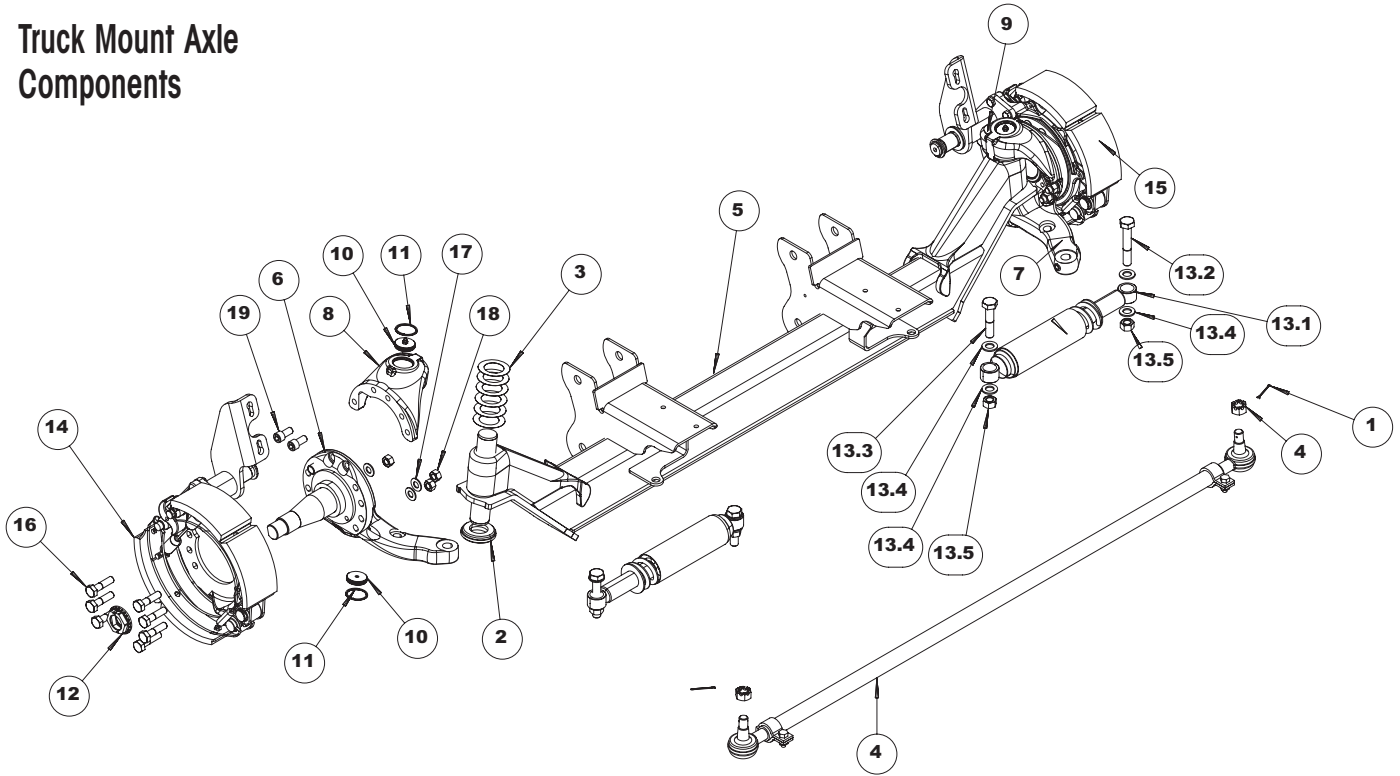
Bushing Kit



REPLACEMENT BUSHING KIT - PN: 002237			
ITEM	PART NO.	DESCRIPTION	QTY.
1	002520	PLASTIC LINER	1
2	002582-1	BUSHING	1
3	B-14495	WEAR PAD	2
4	SA-100-109	7/8-9 X 7-1/2 HHB GRADE 8	1
5	SA-1500-25	7/8 FLAT WASHER R.40-45-C	2
6	SA-8900-29	7/8-9 PREVAILING TORQUE NUT	1



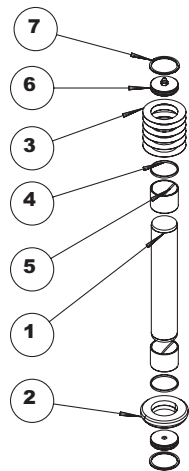
Truck Mount Axle Components



ITEM	PART NUMBER	DESCRIPTION	QUANTITY
1	001524-15	COTTER PIN	2
2	001620	THRUST BEARING	2
3	001764-1	.011/.009 SHIM	12
4	002890	TIE ROD ASSEMBLY	1
5	AXLE WDMT	CALL WITH MODEL NUMBER FOR PN	1
6	003259-1	KNUCKLE BACKBONE	1
7	003259-2	KNUCKLE BACKBONE	1
8	003260-1	UPPER KINGPIN CONNECTION	1
9	003260-2	UPPER KINGPIN CONNECTION	1
10	003263	KING PIN CAP ASSEMBLY	4
11	003267	RETAINING RING	4
12	003269	METFORM/AXILOK SPINDLE NUT	2

ITEM	PART NUMBER	DESCRIPTION	QUANTITY
13	003273	STABILIZER KIT	1
13.1	A-14496	STABILIZER (STEERING DAMPER)	2
13.2	SA-1000-110	3/4-10 X 4-1/2 HHB GRADE 8	2
13.3	SA-1000-27	3/4-10 X 3-1/2 HHB GRADE 8	2
13.4	SA-1500-6	3/4 FLAT WASHER HARD F436	8
13.5	SA-8900-3	3/4-10 LOCK NUT	4
14	003274-1	15 X 4 BRAKE ASSEMBLY, LH	1
15	003274-2	15 X 4 BRAKE ASSEMBLY, RH	1
16	003349-1	5/8-11 X 2-1/2 HH BOLT	14
17	SA-1500-7	5/8 FLAT WASHER HARD F436	6
18	SA-8900-4	5/8-11 LOCK NUT	6
19	03405-1	5/8-11 X 1-1/4 SHCS	4

Kingpin Bushing Kit



REPLACEMENT KINGPIN BUSHING KIT - PN: 003270			
ITEM	PART NO.	DESCRIPTION	QTY.
1	KINGPIN	NOT INCLUDED	1
2	001620	THRUST BEARING	1
3	001764-1	.011/.009 SHIM	6
4	002593	KINGPIN SEAL	2
5	004725	KINGPIN BUSHING (PHASE II)	2
6	003263	KINGPIN CAP ASSEMBLY	2
7	003267	RETAINING RING	2

www.hendrickson-intl.com



Auxiliary Axle Systems
277 North High Street
Hebron, OH 43025 USA
740.929.5600
Fax 740.929.5601

Auxiliary Axle Systems
250 Chrysler Drive, Unit #3
Brampton, ON L6S 6B6 Canada
905.789.1030
Fax 905.789.1033